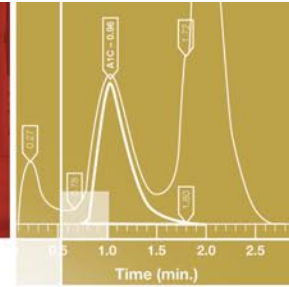


Meridian Healthcare®
medical diagnostics and equipment



Lyphocheck® Diabetes Control & Hemoglobin A1C Linearity Set

Monitor your laboratory's Hemoglobin A1C testing on a daily basis with Lyphocheck® Diabetes Control, and verify your instrument's linearity twice a year with Lyphocheck® Hemoglobin A1C Linearity Set.



Lyphochek® Diabetes Control

A human whole blood based product designed to monitor the performance of hemoglobin tests used in diabetes monitoring, including Hemoglobin A1C, Total Hemoglobin, Hemoglobin A₁, Hemoglobin F, and Total Glycated Hemoglobin. Available in two critical levels specific to diabetes. With a 0.5 mL fill size and an open-vial stability of 7 days, waste is minimized. A 3 year shelf life reduces the frequency of lot crossovers, resulting in significant reagent cost savings.

- Human whole blood based control
- 2 significant levels
- Convenient 0.5 mL fill size
- Assayed for over 30 methods
- 3 year shelf life at 2–8°C
- 7 day open-vial stability at 2–8°C
- Extensive value assignment listings

Analytes

Lyphochek® Diabetes Control

Hemoglobin A₁
Hemoglobin A1C
Hemoglobin F
Hemoglobin, Total
Hemoglobin, Total Glycated

Refer to the package insert of currently available lots for specific analyte and stability claims

Ordering Information

| Cat # | Lyphochek® Diabetes Control | Quantity |
|-------|--|------------|
| 740 | Bilevel (3 of each level) | 6 x 0.5 mL |
| 740X | Bilevel MiniPak (1 of each level)..... | 2 x 0.5mL |

Lyphochek® Hemoglobin A1C Linearity Set

A human whole blood based product designed to verify linearity throughout the patient reportable range of hemoglobin A1C assays.

- Human whole blood based control
- 4 significant levels
- 3 year shelf life at 2–8°C
- 7 day open-vial stability at 2–8°C
- Linearity Web™ software tool available on QCNet™ (www.QCNet.com)

Assayed values available for common analyzers:

Bio-Rad Analyzers

- D-10™
- Micromat II™
- DiaSTAT™
- VARIANT™
- VARIANT™ II TURBO

Other Analyzers

- Beckman Coulter® Synchron Series
- Dade Behring Dimension® Series
- Olympus® Systems
- Roche COBAS Integra® & Hitachi®
- Siemens ADVIA® 1650
- TOSOH A1C 2.2 Plus & G7

Analytes

Lyphochek® Hemoglobin A1C Linearity Set

Hemoglobin A1C

Refer to the package insert of currently available lots for specific analyte and stability claims

Target Values for Hemoglobin A1C*

| | |
|---------|-----------|
| Level 1 | 2.5–4.0% |
| Level 2 | 5.0–7.0% |
| Level 3 | 9.0–12.5% |
| Level 4 | 17–22% |

*Ranges reflect typical recovery values for this product. Exact values may vary depending on methodology. Absolute values may also be dependent on the accuracy of the instruments/reagent system calibration, if applicable.

Ordering Information

| Cat # | Lyphochek® Hemoglobin A1C Linearity Set | Quantity |
|-------|---|------------|
| 120 | Set (1 of each level)..... | 4 x 0.5 mL |

ITALY CONTACT:

Meridian Healthcare srl

Via G. Guglielmino, 68 - 95030 Tremestieri Etneo - CT
Tel. 095 725 68 69 - Fax: 095 725 44 54
e-mail: info@meridianhealthcare.it

Meridian Healthcare®



Bio-Rad
Laboratories

Clinical
Diagnostics Group